



“Trusted solutions
for over 25 years”

Key Brands
Distributed & Serviced



* Stocking Distributor

- **Safety Relief Valves** > Modulating and snap acting pilot, conventional spring, Dead weight
- **Safety Relief Valve Service** > National Board VR / UV certified for gas, steam & liquid, Oxygen Cleaning, Conversions, Valve Performance tracking, Hydro-set
- **Process Line Valves** > Gates, Globes, Checks, Ball, Plug, Butterfly, Control Valves, Pig Valves
- **Process Line Valve Services** > OEM Conversions, trim modifications, cryo conversions, seating, compliance testing, Oxygen cleaning, Cv validation in our flow lab
- **Control Valves** > Design and selection, automation center, CNC integration brackets, gear reduction, P&ID take-offs
- **Customized Valves** > Swing check dampers, Fusible Links for fire safe shut-off, stem/packing live load conversions, material upgrades to stems/discs/seats
- **Actuators** > Limitorque, Auma, Bettis, EIM, Rotork, Morin
- **Actuator Service** > Rebuild/Remake Gears, Bearing upgrades, stem nuts & integration brackets, torque output validation
- **Vacuum Relief Valves** > Enardo, Groth, Varec, Total, Shand & Jurs
- **Vacuum Relief Valve Services** > Calibrate/re-set to release at spec levels, rebuild & upgrade seals, upgrade to new materials
- **Excess Flow Valves** > Fully automatic and manual flow limiting valves for protection and safety. Styles: In-line, Flanged, Tank Valves. NFPA58 Compliant.
- **Check Valves** > Back flow protection, automatic re-circ valves (ARC)
- **Isolation Diverter Valves** > Change over valves, dual protection system.
- **Gauges & Instrumentation** > Pressure and Temperature Gauges and transmitters, digital gauges—Wika & Ashcroft- calibration services.

• Valve repair



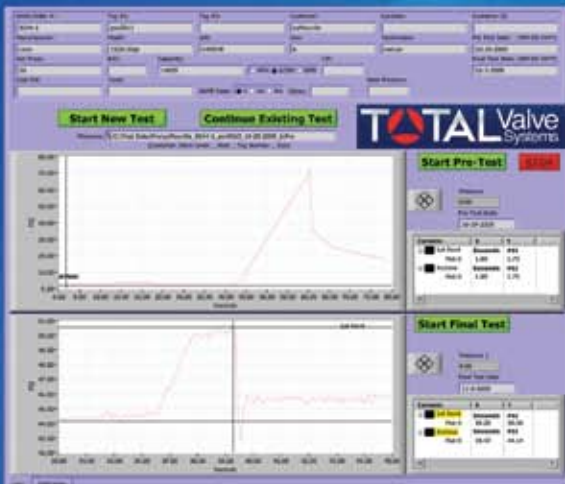
- Field Service Repair
 - 3 mobile trailers
 - In-line valve repair
 - Welding services - "R" Stamp
 - In-line machining/seating
 - API / ASME compliance testing
 - Hydro-set testing.
- In-Shop Repair
 - VR / UV Certified for gas, steam & liquid
 - Valve diagnostic tools
 - OEM conversions
 - Web based test reports
 - Oxygen cleaning
 - CNC Equipment
 - UV Assembly

• Valve In-line leak detection



- Real time non-invasive valve performance measurement .
- Before and after valve service performance reports.
- Improve shut-down planning for replacement versus repair decisions.
- Cost reduction in capital and plant operating cost via identifying valve leakage.

• Valve Performance System



- DOT Compliance testing-192.743, 192.739, 195.428.
- Real time test reports at site.
- Valve Diagnostic Tool to lower cost.
- API/ASME compliance reports.

• Valve test reports stored 24/7 online – web based system

- Access 24 / 7 to all test reports
- Maintenance history on valves
- Stored P&ID / Valve tag numbers

