

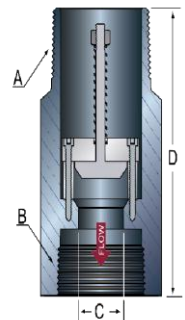


EXCESS FLOW VALVE – 2130

2130 Series Excess Flow Valves are designed for use in liquid or vapor service to stop the flow in the event of an over-pressure situation. The 2130 Series have male NPT connections on the inlet side and female NPT connections on the outlet side. These valves offer excellent flow rates and can be used in many different applications. Available in carbon or stainless steel construction. Other materials are available upon request. Each valve comes standard with 316/SS springs.



	A Inlet Connection	B Outlet Connection	C Orifice Dia.	D Length	Outside Dia.
2130-G	1 ½" MNPT	1 ½" FNPT	0.80	3 3/5"	2 3/8" Hex
2130-I	2" MNPT	2" FNPT	1.10	4 ¾"	2 7/8" Hex
2130-K	3" MNPT	3" FNPT	1.65	6 7/8"	4" Hex
2130-L	4" MNPT	4" FNPT	2.20	8 ½"	5 ½" Rnd

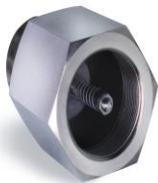


Different size end connections are available

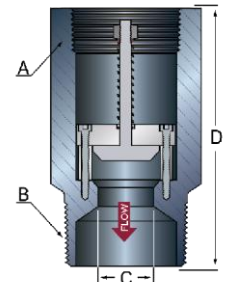
Typical dimensions are listed. Data contained herein can be altered to accommodate design changes and changes to increase performance. Information on this page is the sole property of L6 Inc. d/b/a Total Valve Systems.

EXCESS FLOW VALVE – 2140

2140 Series Excess Flow Valves have female NPT connections on the inlet side and male NPT connections on the outlet side. The 2140 Series is designed for use in liquid or vapor service to stop flow in the event of an over pressure situation. Available in carbon or stainless steel construction. Other materials are available upon request. Each valve comes standard with 316/SS springs.



	A Inlet Connection	B Outlet Connection	C Orifice Dia.	D Length	Outside Dia.
2140-G	1 ½" FNPT	1 ½" MNPT	0.80	3 3/5"	2 3/8" Hex
2140-I	2" FNPT	2" MNPT	1.10	4 ¾"	2 7/8" Hex
2140-K	3" FNPT	3" MNPT	1.65	6 7/8"	4" Hex
2140-L	4" FNPT	4" MNPT	2.20	8 ½"	5 ½" Rnd



Different size end connections are available.

Closing flow rates for the 2130 and 2140 Series Excess Flow Valves are factory preset per customer