

**Key Brands  
Distributed & Serviced**



\* Stocking Distributor

- **Safety Relief Valves** > Modulating and snap acting pilot, conventional spring, Dead weight
- **Safety Relief Valve Service** > National Board VR / UV certified for gas, steam & liquid, Oxygen Cleaning, Conversions, Valve Performance tracking, Hydro-set

---

- **Process Line Valves** > Gates, Globes, Checks, Ball, Plug, Butterfly, Control Valves, Pig Valves
- **Process Line Valve Services** > OEM Conversions, trim modifications, cryo conversions, seating, compliance testing, Oxygen cleaning, Cv validation in our flow lab
- **Control Valves** > Design and selection, automation center, CNC integration brackets, gear reduction, P&ID take-offs
- **Customized Valves** > Swing check dampers, Fusible Links for fire safe shut-off, stem/packing live load conversions, material upgrades to stems/discs/seats

---

- **Actuators** > Limatorque, Auma, Bettis, EIM, Rotork, Morin
- **Actuator Service** > Rebuild/Remake Gears, Bearing upgrades, stem nuts & integration brackets, torque output validation

---

- **Vacuum Relief Valves** > Enardo, Groth, Varec, Total, Shand & Jurs
- **Vacuum Relief Valve Services** > Calibrate/re-set to release at spec levels, rebuild & upgrade seals, upgrade to new materials

---

- **Excess Flow Valves** > Fully automatic and manual flow limiting valves for protection and safety. Styles: In-line, Flanged, Tank Valves. NFPA58 Compliant.
- **Check Valves** > Back flow protection, automatic re-circ valves (ARC)
- **Isolation Diverter Valves** > Change over valves, dual protection system.

---

- **Gauges & Instrumentation** > Pressure and Temperature Gauges and transmitters, digital gauges—Wika & Ashcroft- calibration services.

## Valve repair



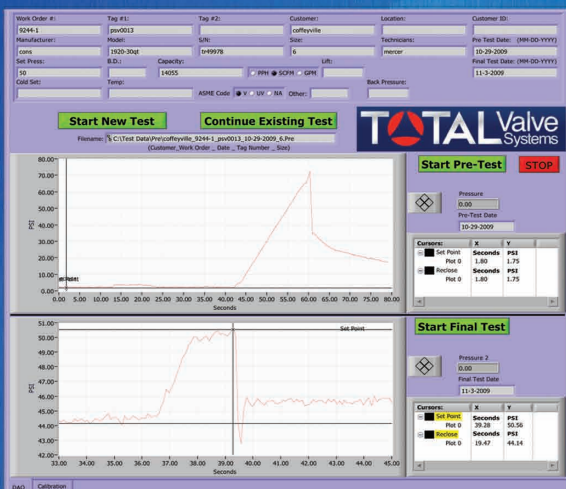
- Field Service Repair
  - 3 mobile trailers
  - In-line valve repair
  - Welding services
  - In-line machining/seating
  - API / ASME compliance testing
  - Hydro-set testing.
- In-Shop Repair
  - VR Certified for air, steam & liquid
  - Valve diagnostic tools
  - OEM conversions
  - Web based test reports
  - Oxygen cleaning
  - CNC Equipment

## Valve In-line leak detection



- Real time non-invasive valve performance measurement .
- Before and after valve service performance reports.
- Improve shut-down planning for replacement versus repair decisions.
- Cost reduction in capital and plant operating cost via identifying valve leakage.

## Valve Performance System



- DOT Compliance testing-192.743, 192.739, 195.428.
- Real time test reports at site.
- Valve Diagnostic Tool to lower cost.
- API/ASME compliance reports.

## Valve test reports stored 24/7 online – web based system

- Access 24 / 7 to all test reports
- Maintenance history on valves
- Stored P&ID / Valve tag numbers

