



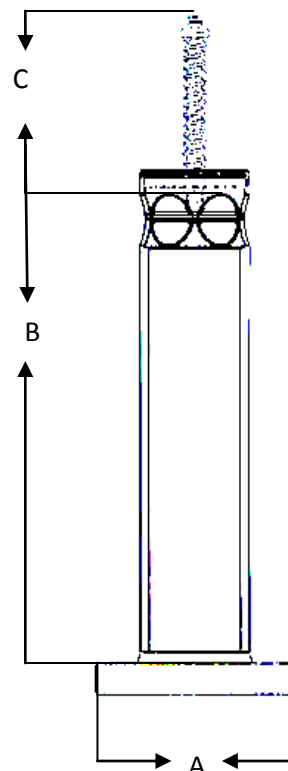
EXCESS FLOW VALVE – 2400

2400 Series Excess Flow Valves are designed to provide protection for LPG (Liquid Propane Gas) service, to meet specific flow requirements, and size requirements. The internal parts for the valves are stainless steel while the bodies are carbon steel. Custom flanges, sizes, and materials are available.

SIZE	STANDARD		MAN & ACT	PIPE B	LENGTH C
	150 # A	300 # A	150 # & 300 # A		
2"	0.75"	0.88"	2.50"	1.90"	0.25" increments added over the customer nozzle length to desired clearance.
3	0.94	1.13	2.50	2.50	
4	0.94	1.25	3.13	3.50	
6	1.00	1.44	3.13	5.56	
8	1.13	1.63	11.25	7.63	
10	1.19	1.88	13.68	8.63	
12	1.25	2.00	12.50	10.75	
14	1.38	2.13	16.00	12.75	
16	1.44	2.25	18.50	14.00	

These dimensions are for standard designs as reference only.
Valves can be custom-engineered as needed.

Typical dimensions are listed. Data contained herein can be altered to accommodate design changes. Information on this page is the sole property of L6 Inc. d/b/a Total Valve Systems.



Corporate Office
1300 East Memphis 741
P.O. Box 1957
Broken Arrow, OK
www.totalvalve.com

Tel: 1-800.324.7035
918.258.7035 Tel/918-251.6426 Fax
Email: sales@totalvalve.com